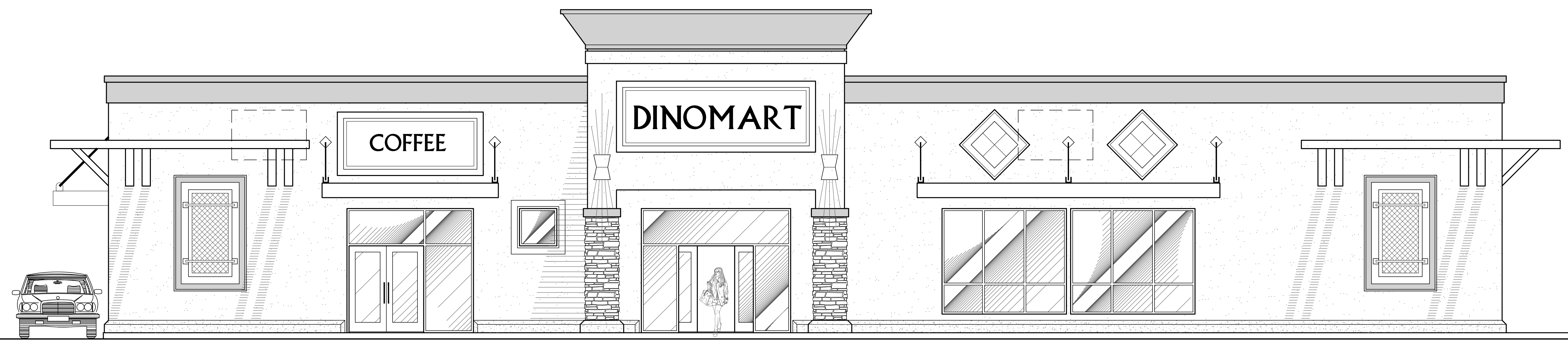


CONVENIENCE STORE SHELL BUILDING

FLOOR PLAN
SCALE: 1/4" = 1'-0"



FRONT SOUTH - EXTERIOR ELEVATION
SCALE 1/4" = 1'-0"

Design Development
INC.
LEAD ARCHITECT
OWEN GABRIELLE HALE
LICENSE # 181585
CORONA DEL MAR, CA 92625
OFFICE: (714) 662-3776
DESIGN@DEVELOPMENTH.COM
FAX: (714) 662-3777

ALL DRAWINGS ARE AN INSTRUMENT OF SERVICES PROVIDED BY DESIGN DEVELOPMENT INC. UNDER CONTRACT WITH THE CLIENT. ANY REVISIONS OR CHANGES TO THESE DRAWINGS MUST BE MADE IN WRITING AND APPROVED BY THE ARCHITECT. THIS DOCUMENT IS NOT TO BE REPRODUCED OR TRANSMITTED IN ANY FORM OR BY ANY MEANS, ELECTRONIC OR MECHANICAL, INCLUDING PHOTOCOPYING, RECORDING, OR BY ANY INFORMATION STORAGE AND RETRIEVAL SYSTEM, WITHOUT THE WRITTEN PERMISSION OF DESIGN DEVELOPMENT INC.

COMPLIANCE:
2022 CALIFORNIA BUILDING CODE
2022 CALIFORNIA ELECTRICAL CODE
2022 CALIFORNIA MECHANICAL CODE
2022 CALIFORNIA PLUMBING CODE
2022 CALIFORNIA FIRE CODE
2022 CALIFORNIA ENERGY CODE

Owen Hale

PROPOSED: CONVENIENCE STORE SHELL BUILDING
SAO International
508 MARGUERITE AVE
CORONA DEL MAR CA 92625
[714] 833-3002 & [909] 239-2777

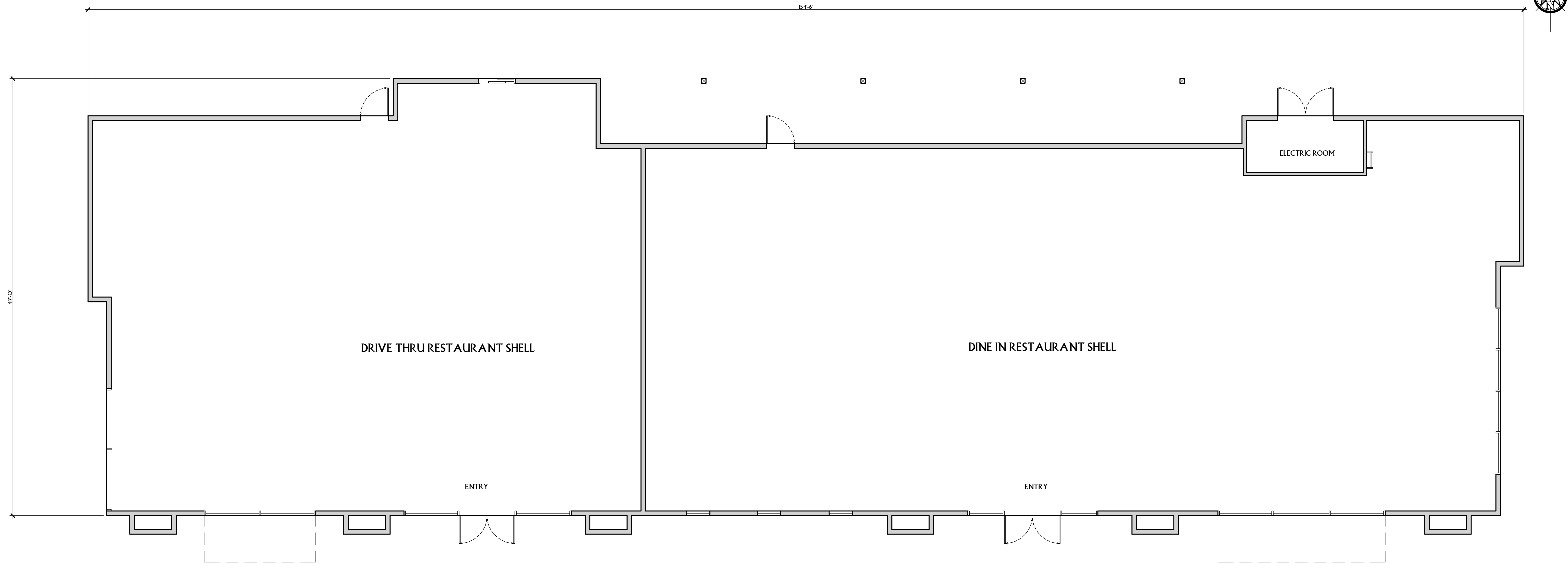
REVISIONS	SYM.	DATE

DESIGNED ON DATE
5/20/23

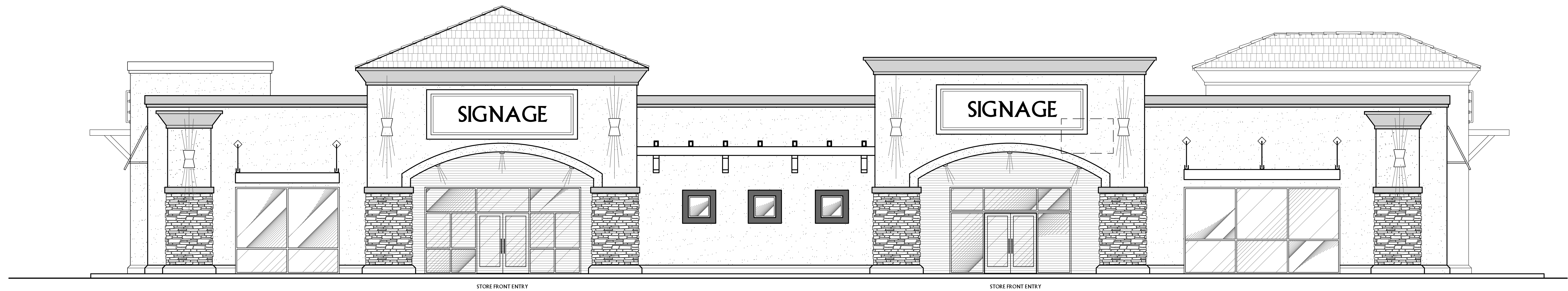
PROJECT NUMBER
52C-N65

SHEET NAME
C-STORE
FLOOR PLAN
EXTERIOR
ELEVATION

SHEET NUMBER
A-1



FLOOR PLAN
SCALE: 3/16" = 1'-0"



FRONT SOUTH - EXTERIOR ELEVATION
SCALE: 3/16" = 1'-0"

Design Development
LEAD ARCHITECT
OWEN GABRIELLE HALE
LICENSE # BL31845
DESIGN DEVELOPMENT INC.
MAILING: PO BOX 28554, MELBA, CA 92739
OFFICE: (760) 662-3776
FAX: (760) 954-8777
DESIGN@DEVELOPMENTHAI.COM

ALL DRAWINGS ARE AN INSTRUMENT OF SERVICES PROVIDED BY DESIGN DEVELOPMENT INC. AND ARE THE PROPERTY OF DESIGN DEVELOPMENT INC. ANY REPRODUCTION OR DISTRIBUTION OF THESE DRAWINGS WITHOUT THE WRITTEN CONSENT OF DESIGN DEVELOPMENT INC. IS AN UNLAWFUL ACT. THESE DOCUMENTS ARE FOR INFORMATION ONLY.

COMPLIANCE:
FOR CALIFORNIA BUILDING CODE
FOR CALIFORNIA FIRE CODE
FOR CALIFORNIA MECHANICAL CODE
FOR CALIFORNIA ELECTRICAL CODE
FOR CALIFORNIA ENERGY CODE

Design Development

PROPOSED: RESTAURANT SHELL BUILDING
SAO International
508 MARGUERITE AVE
CORONA DEL MAR CA 92625
[714] 833-3002 & [909] 239-2777
Project Location: NEC RANCHO & HWY 395 ADELANTO CA 92301

REVISIONS	DATE
SYM.	DATE

DESIGNED ON DATE
5/2025

PROJECT NUMBER
52C-N65

SHEET NAME

SHEET NUMBER
A-1